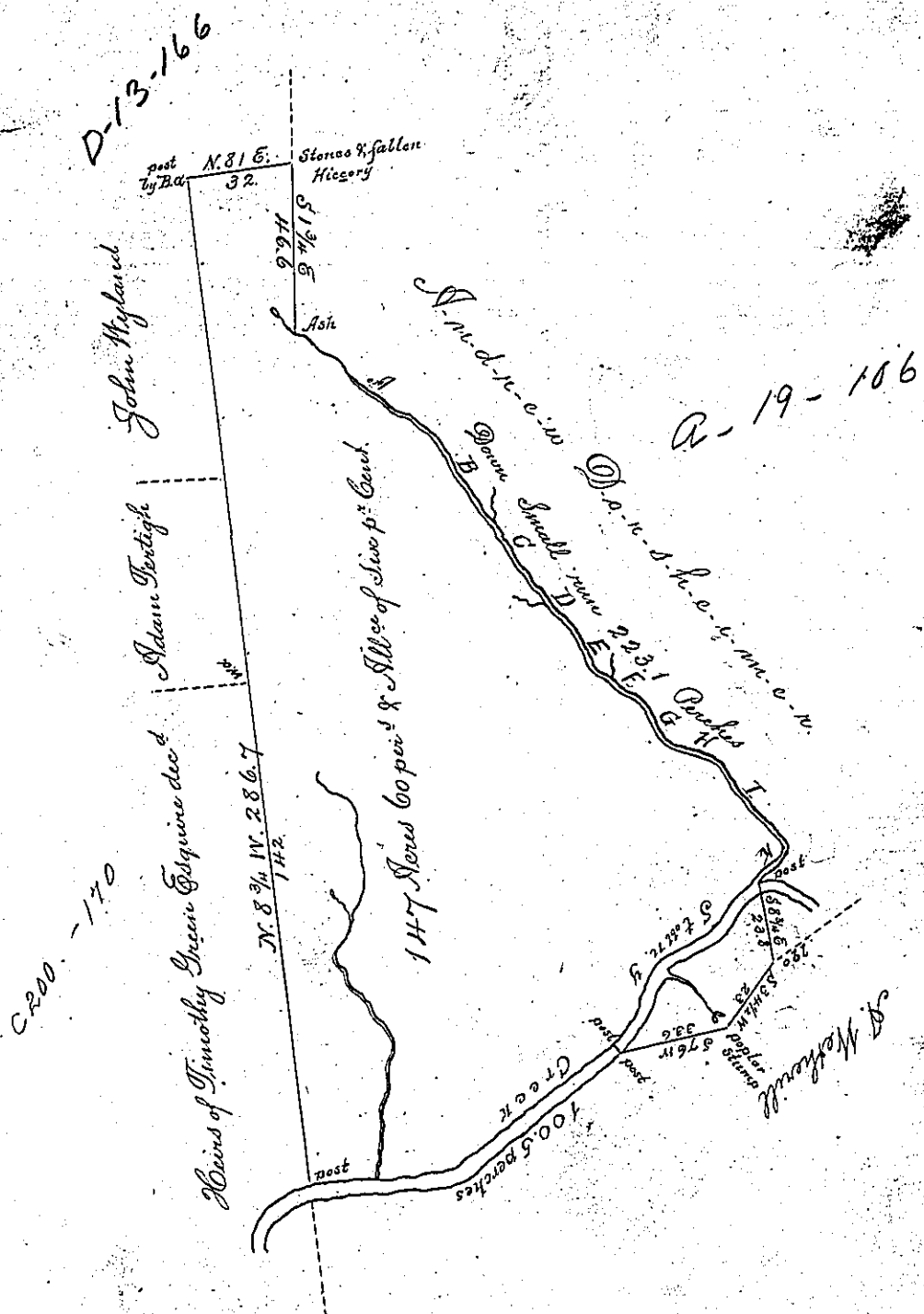


References Beg. at N. Sh.
 Hence Down run
 A. S. 54 1/2 E. 50
 B. S. 32 1/2 E. 31
 C. S. 37 1/4 E. 22
 D. S. 53 1/2 E. 18
 E. S. 24 1/2 E. 13
 F. S. 37 1/4 E. 19
 G. S. 32 1/2 E. 13
 H. S. 73 1/2 E. 15
 I. S. 41 E. 31
 K. S. 30 W. 11 1/2 to Creek (at post)
 223.1
 thence crossing same



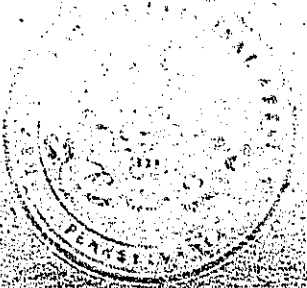
Courses & Dist^s down Stony Creek
 Beg. at post South side thence Cr.
 same N. 50 1/2 W. 3.4 to post on North
 side thence Down same
 S 50 1/2 W 38.5
 S 85 W 34
 West 8. to post
 100.5

Surveyed October 20th 1813 for the Heirs of Robert McCord dec^d the above described Tract of Land situate in Middle Paxton Township Dauphin County containing One hundred forty seven Acres sixty perches ^{of all of Six p. Cr.} by Application of the 10th day of October 1765 N^o 1053

To Andrew Porter Esquire
 Surveyor General Pa

Thomas Smith D.S.

IN TESTIMONY that the above is a copy of the original remaining on file in the Department of Internal Affairs of Pennsylvania, made conformably to an Act of Assembly approved the 16th day of February, 1833, I have hereunto set my Hand and caused the Seal of said Department to be affixed at Harrisburg, this



fifth day of May 1893

Samuel R. Brown
 Secretary of Internal Affairs